



The countryside charity
Shropshire

Charles Green

CPRE Shropshire

Oswestry Rural Parish Council – Annual Parish Meeting
29th May 2025

What and who are CPRE?

- CPRE is the Campaign to Protect Rural England - The Countryside Charity
- Standing up for the countryside for nearly 100 years nationally and for over 75 years in Shropshire (run by volunteers and one paid part-time Branch Manager)
- Interface of the environment, nature, the countryside, communities, farming and planning, using evidence to punch above our weight.
- Integral in the formation of many planning laws
- Much time on planning and the planning system - trying to prevent undesirable development in the countryside - under increasing threat from Local Plans and Government policy, i.e. from unsustainable growth, at odds with climate emergency and ecological emergency
- Liaise and work with many other organisations
- Leaflet explains more



The countryside charity
Shropshire

"Standing up for the Shropshire countryside"



www.cpreshropshire.org.uk

The Shropshire Landscape you cherish is disappearing fast

Shropshire is an astonishingly beautiful and varied county, with its complex geology and landscapes, green fields, ancient woodlands, meres, mosses, fertile plains and rolling hills. Many of us deeply cherish it. Yet every year, irreplaceable countryside is damaged or lost forever.

Our precious Green Belt, Shropshire Hills National Landscape and green fields are under threat as up to 31,300 new homes are planned for Shropshire between 2016 and 2038 and a further 20,200 for Telford & Wrekin between 2020 and 2040. Labour's new rules may require even more house building than that.

We really need your help to protect our local countryside—and the nation's—from this and other serious threats from inappropriate development.

CPRE Shropshire believes in the right housing in the right places, which means brownfield first rather than greenfield, and much more affordable housing, and that productive farmland should be prioritised for growing food.



You can help us!

Join us!

By joining CPRE, you are helping to ensure that a beautiful living countryside thrives for generations to come.

We all need the countryside, whether it's for fresh air, sport and leisure, delicious local produce, beautiful landscapes, or vibrant towns and villages. The countryside is invaluable.

CPRE membership costs just £5 per month. Join us now online here: www.cpreshropshire.org.uk/join-us or scan in the QR code below

Volunteer with us!

We need people to help in any way they can, for instance by monitoring local planning applications (particularly in the Shrewsbury, Telford & Wrekin and North Shropshire areas), by taking our message out to Shropshire events and shows, and, of course, by taking part in our Hedgerow project.

Contact us!

Sarah Jameson, Branch Manager
admin@cpreshropshire.org.uk
01547 528546






What does CPRE Shropshire do?

CPRE Shropshire is the county branch of the national campaigning charity, CPRE. We exist to promote the beauty, tranquillity and communities of the county and aim to ensure the countryside is protected for now and future generations. We stand up for the countryside and are trusted through using evidence, knowledge and experience to influence positive change – we are known for punching above our weight!

CPRE Shropshire is run entirely by volunteers, with only one paid part-time Branch Manager

Our six districts, based on the pre-Unitary District Council areas, also enable us to concentrate on very local issues.

As well as our vanguard Hedgerow project, much time is spent responding to planning matters that we feel threaten the Shropshire landscape. We also offer advice and guidance to members of the public concerned about inappropriate planning applications local to them.

We liaise closely with other agencies where appropriate, eg Shropshire Hills National Landscape, Shropshire Wildlife Trust, Civic Societies and the National Trust.

We also support Parish Councils and other amenity groups in Shropshire to address local problems.

Hedgerow project

Since 2020, CPRE Shropshire has been running a hedgerow project and so far we have planted 18km of new native hedgerow in the Shropshire landscape with the help of volunteers. We have run courses in the traditional land skills of hedgelaying and coppice management which help enhance our countryside and provide an essential home - for our wildlife.

Shropshire Council Local Plan Review

- Started in January 2017
- Many stages up to submission to the Planning Inspectorate in late 2021
- Hearing sessions from July 2022 to October 2024
- Planned hearings for November 2024 cancelled due to concerns as to soundness
- Eventually withdrawn in March 2025 (yet to be formally ratified by Full Council)
- December 2024 NPPF changes and New Standard Methodology for housing numbers, increased from 1,070pa to 1,994pa
- Consequently 5 year supply of housing land only at 4.73 (4.95 from 20/09/2013 to 12/08/2014)
- NPPF para 11.d) applies, which requires that permission is granted to any and everything, except in protected areas or where *“adverse impacts would significantly and demonstrably outweigh the benefits”*, which is hard to prove. The “golden thread” running through the NPPF since its inception in 2012 remains the *“presumption in favour of sustainable development”*

Shropshire Council - Local Housing Need Assessment - old Standard Method as at date of introduction of new Standard Method

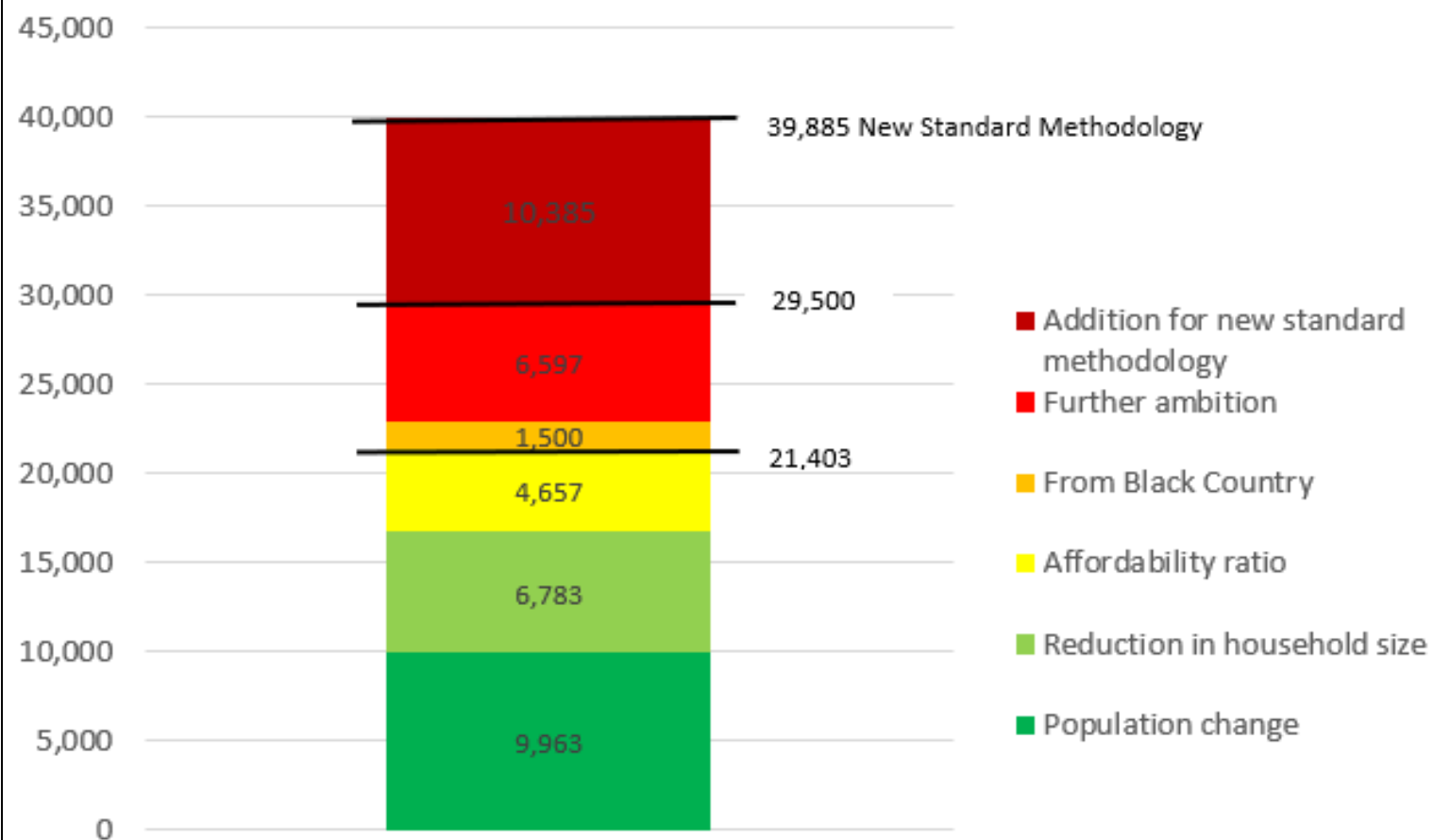
	2024	2034	10-year change	Annual	for 20yrs
Step 1: Setting the baseline					
2014-based Subnational population projections	323,600	334,800	11,200	1,120	22,400
2014-based Subnational household projections	143,925	152,298	8,373	837	16,746
Average population per household	2.248	2.198			
Step 2: An adjustment to take account of affordability					
Median house price (y/e 30/9/2023)	265,000				
Median earnings (y/e 30/9/2023)	31,363				
Affordability ratio	8.45				
Excess of affordability ratio above 4.0 x 0.0625 of change in household projection			2,329	233	4,657
Totals			10,702	1,070	21,403

	Standard Method		
	Old	New	% increase
Baseline need	837	1,206	44%
Affordability uplift	233	788	238%
Total need	1,070	1,994	86%

Shropshire Council - Local Housing Need Assessment under New Standard Methodology (12/12/24)

	2019	2020	2021	2022	2023	For 20 years
Step 1 - Setting the baseline – 0.8% of existing housing stock for the area						
https://www.gov.uk/government/statistical-data-sets/live-tables-on-dwelling-stock-including-vacants						
Housing stock					150,689	
0.8% thereof					1,206	
Step 2: An adjustment to take account of affordability						
Adjustment factor = $\left(\frac{\text{five year average affordability ratio} - 5}{5}\right) \times 0.95 + 1$						
https://www.ons.gov.uk/peoplepopulationandcommunity/housing/datasets/ratioofhouseprice-to-workplace-based-earnings-lower-quartile-and-median						
Median house price - Table 5a	218,750	229,995	257,500	258,500	265,000	
Median earnings - Table 5b	27,261	28,659	27,407	31,118	31,363	
Affordability ratio - Table 5c	8.02	8.03	9.40	8.31	8.45	
Check	8.02	8.03	9.40	8.31	8.45	
Average					8.44	
Excess of affordability ratio above 5.0 x 0.095 x Step 1					788	
Total					1,994	39,885

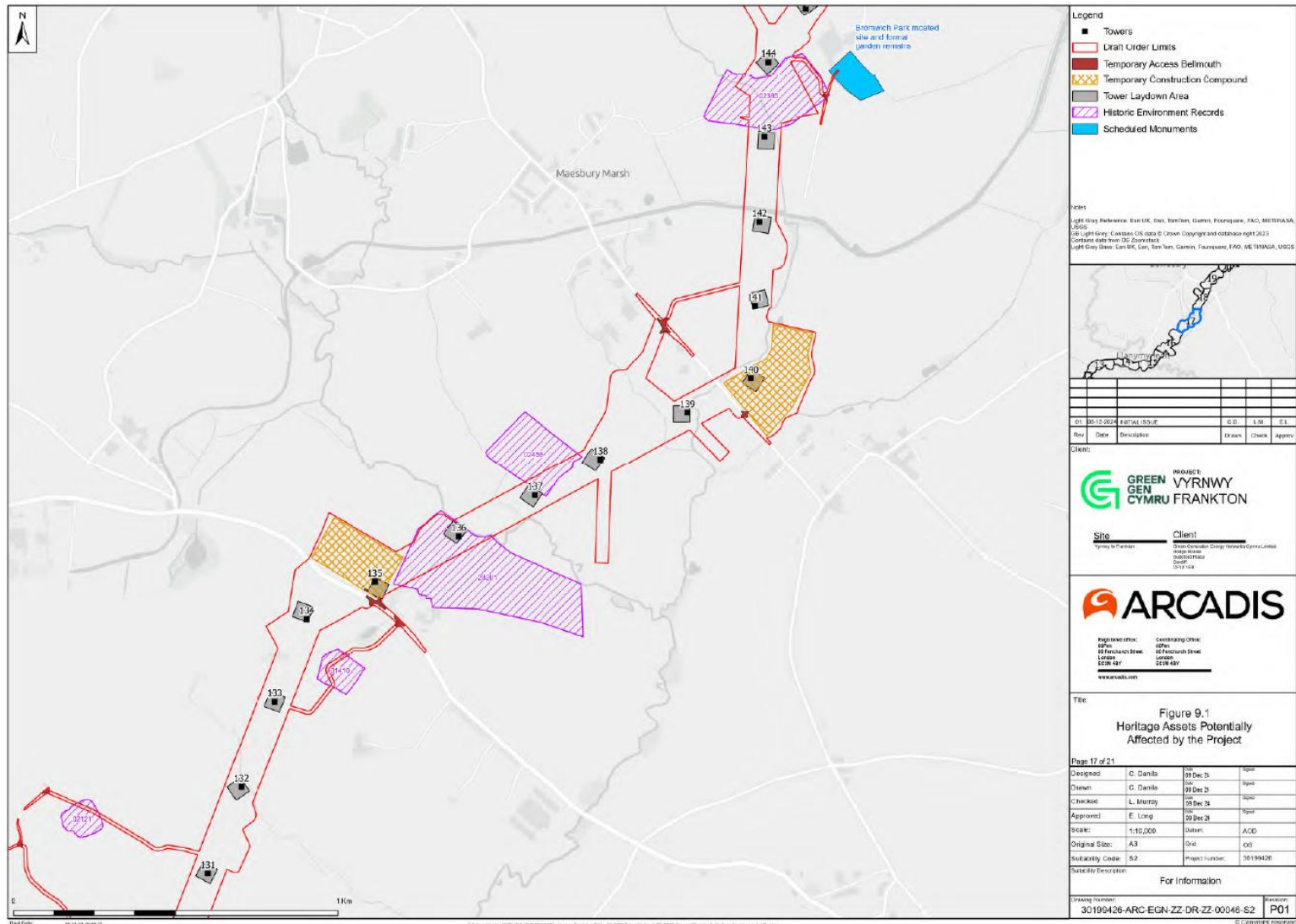
Shropshire Council Draft Plan projected housing figures 2025-45: requirement 29,500, need 21,403 (using "old" standard methodology)



Oswestry Area Committee Parishes

Parish / Town Council	Electors Mar 25 (Note 1)	Council Tax (Note 2)				Community Infrastructure Levy (CIL) (Note 4)						Reserves
		2025/26			Band D Change Increase / (Decrease) %	Cumulative received to 31/3/2024					Available LF & SF (Note 6)	Reserves as 2023/24 AGAR (Note 7)
		Taxbase	Precepts £	Band D Council Tax £		Total received since 1/1/2012	Admin 5%	Neighbour hood Fund 15% (Note 5)	Local Area Fund 72%	Strategic Fund 8%		
Oswestry Town (7 wards)	13,126	5,495	588,315	107.07	4.06	582,362	29,118	86,364	420,192	46,688	-	4,546,798
Oswestry Rural (5 wards)	3,671	1,724	45,000	26.10	11.63	1,265,091	63,255	187,180	913,191	101,466	1,014,657	230,151
Selattyn & Gobowen	3,351	1,377	97,763	71.01	5.00	1,466,241	73,312	204,199	1,069,857	118,873	1,188,730	405,277
St Martins	2,533	1,064	62,042	58.34	0.00	1,173,848	58,692	173,083	847,866	94,207	942,073	515,596
Whittington	2,307	999	61,832	61.90	5.58	1,755,434	87,470	256,914	1,269,945	141,105	1,411,050	282,943
Weston Rhyn	2,103	916	35,000	38.22	0.76	496,330	24,816	68,423	362,781	40,309	403,090	64,426
Llanymynech and Pant	1,491	699	31,000	44.34	8.36	518,701	25,935	75,887	375,191	41,688	416,879	134,502
West Felton	1,251	606	22,119	36.52	24.34	763,024	38,151	114,106	549,691	61,077	360,768	78,850
Kinnerley (4 wards)	1,016	540	26,995	50.00	6.41	518,705	25,935	72,523	378,222	42,025	420,247	51,366
Ruyton-XI-Towns	954	475	33,774	71.07	4.71	97,078	4,854	14,213	70,210	7,801	78,011	78,290
Llanyblodwel	596	278	14,055	50.56	7.01	50,670	2,533	7,445	36,623	4,069	40,692	19,467
Knockin	267	148	17,712	119.51	2.08	331,299	16,565	32,696	253,834	28,204	282,037	24,332
Melverley	105	53	5,520	104.43	4.33	4,383	219	657	3,155	351	3,506	2,608
Total /average	32,771	14,372	1,041,127	72.44	13.86	9,023,165	450,856	1,293,689	6,550,758	727,862	6,561,740	6,434,606

Green Gen Cymru / Bute energy proposals





Pylon numbers	Pylon numbering			
	First	Last	Total	%
Wales	1	114	114	67%
Llanymynech & Pant	115	123	9	5%
Kinnerley	124	127	4	2%
Oswestry Rural	128	154	27	16%
West Felton			0	
Whittington	155	171	17	10%
Hordley			0	
			171	100%

Green Gen Cymru / Bute energy proposals

Conclusions

66. The PEIR lacks much critical information, which prevents a fully informed response being made at this stage of consultation; the consultation has taken place before the project has been worked up in sufficient detail and is therefore not in compliance with GGC's own SCC.
67. There has been insufficient co-ordination with other operators over grid connection strategy.
68. At the time of having to submit this response an answer is still outstanding from the GGC team to the following matter put to them by email on 5 April 2025:
69. This and the other points above indicate that the GGC Vyrnwy/Frankton is at present very far from being ready to connect.
70. Even after eight weeks of consultation, after engaging with GGC personnel at most of the consultation events, and after communicating with the GGC Vyrnwy Frankton Stakeholder Engagement Team, there are still unresolved queries, quite apart from the identified gaps in the information available. It therefore appears unrealistic to expect that adequate consultation can occur within the statutory minimum of 28 days at the DCO stage, when the eventual ES is likely to be sizeably larger than the current PEIR.



CPRE Shropshire
c/o C W Green
The Wood
Maesbrook
Oswestry
Shropshire
SY10 8QU
01691 682213
charleswgreen@msn.com

President: Sir Neil Cossons OBE FSA FMA : Chair: Susan Lockwood

To: Green GEN Cymru
By email only to: info@greengenvyrnwyfrankton.com

16 April 2025

Dear Green GEN Cymru

Green GEN Cymru (GGC) Vyrnwy Frankton Project
Statutory consultation under section 42 of the Planning Act 2008 and the Infrastructure
Planning (Applications: Prescribed Forms and Procedures) Regulations 2009 (the APFP
Regulations)

Introduction

1. CPRE nationally supports the principle of decarbonisation of the UK electricity network, although this does not amount to blanket approval of all and any individual projects, as set out in our comments below.
2. CPRE Oswestry (a District within the CPRE Shropshire Branch) submitted comments for the informal consultation that took place for 6 weeks from 6 September to 18 October 2023 and some of those comments are repeated below.
3. We did not submit comments at the Scoping stage consultation that ran for 4 weeks from 24 January 2024 to 21 February 2024 because, under the rules, it was not open to us or any members of the general public to make any comments, because we were not statutory consultees at that stage, who were the only bodies invited to respond.
4. During the current 8 week consultation running from 19 February to 16 April 2025, CPRE Shropshire members have attended most of the consultation events, have spoken to various members of staff, asked questions at the time, and also sent in some questions by email.
5. This submission now expresses consultation responses in a way that the rather narrow range of questions set out in your hard copy and online Feedback Forms do not necessarily invite or give room for.

Standing up for the Shropshire countryside
CPRE Shropshire is a registered charity (Reg. No. 1184133) and campaigns for a beautiful and living countryside: CPRE is active locally, nationally and internationally. Membership is open to all.

page 1 of 16

Green Gen Cymru / Bute energy proposals

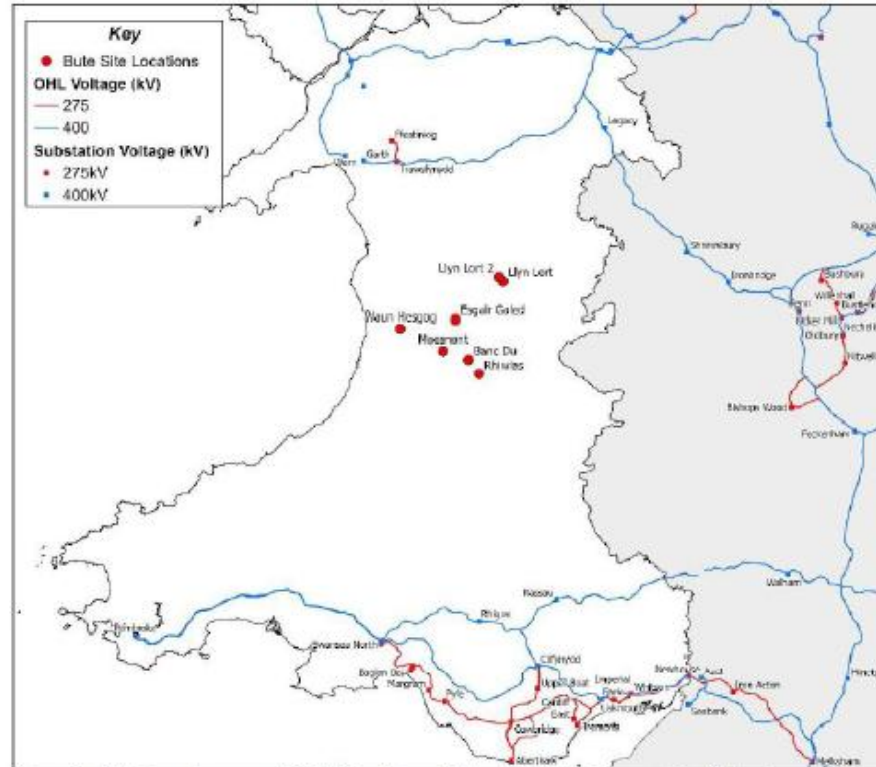
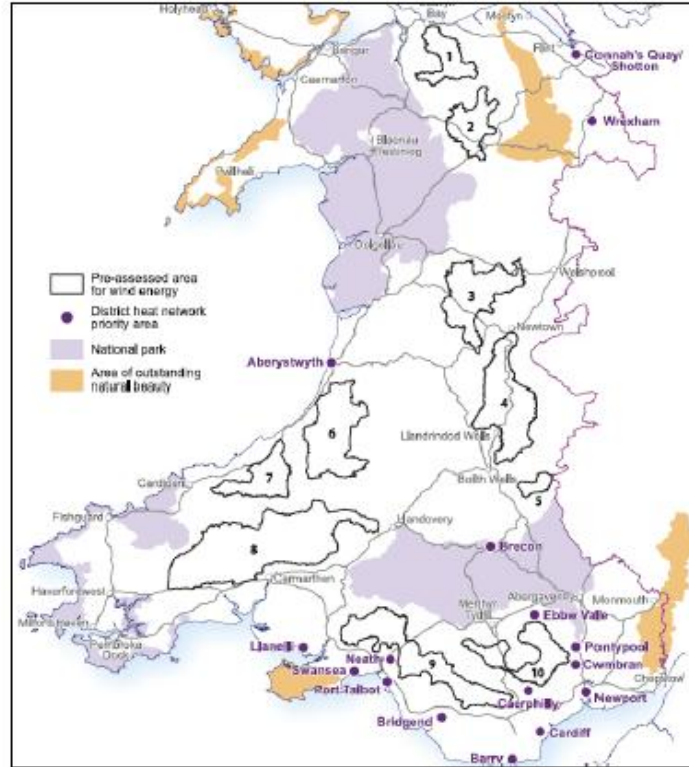


Figure 2 - Bute Energy's proposed Mid Wales Energy Parks and existing Transmission Network infrastructure



Heritage Matters

CPRE Shropshire is one of few branches nationally to have a dedicated heritage adviser

We make representations on applications for major or important listed buildings

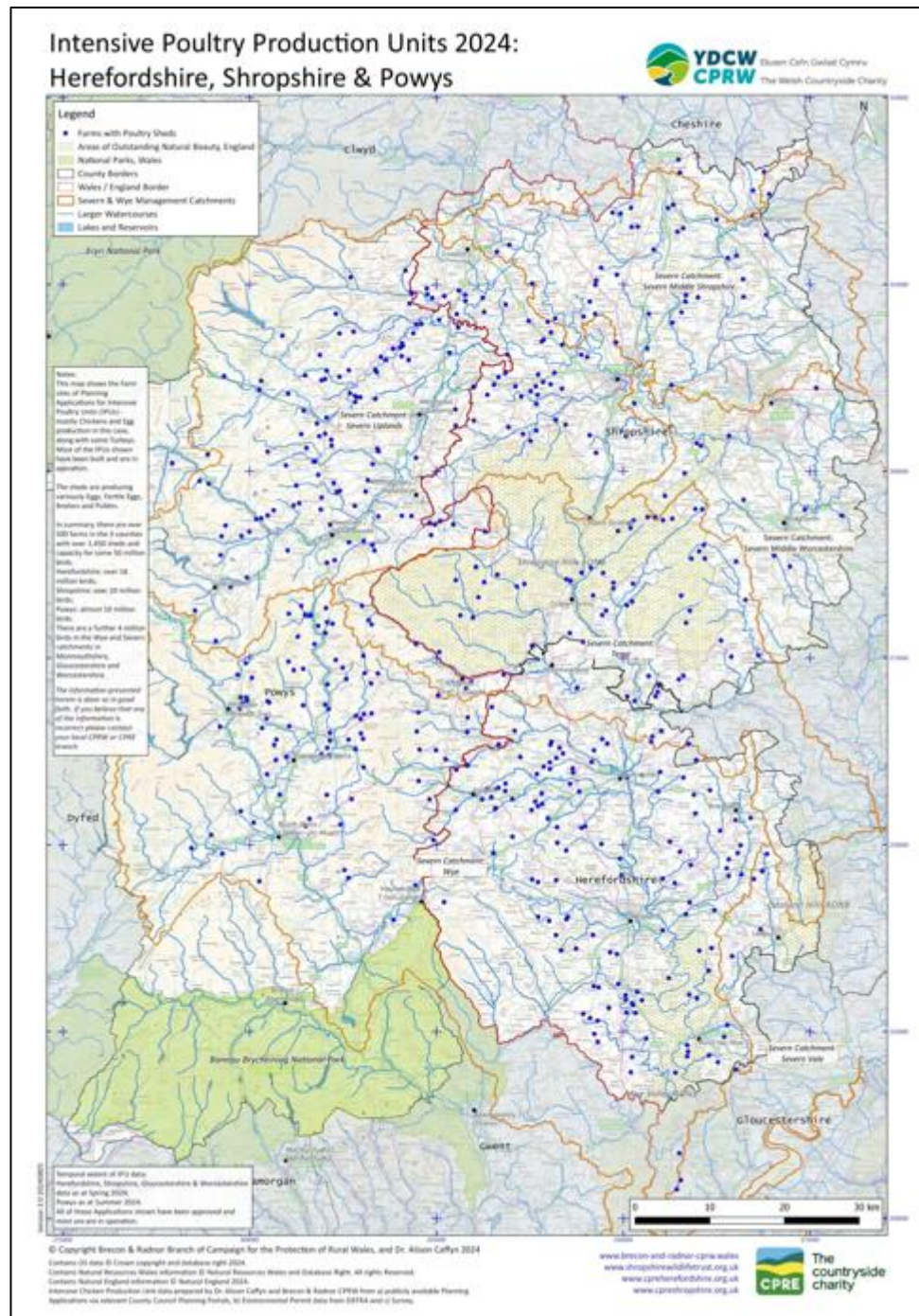
Our heritage adviser has also been instrumental in getting Conservation Areas established in Kinnerley village and, more recently, in West Felton village

Our heritage adviser lives in your parish!

She does note that the village pump at Aston, right by one of the parish notice boards, is wasting away, having last been restored by the Parish Council maybe forty years ago!

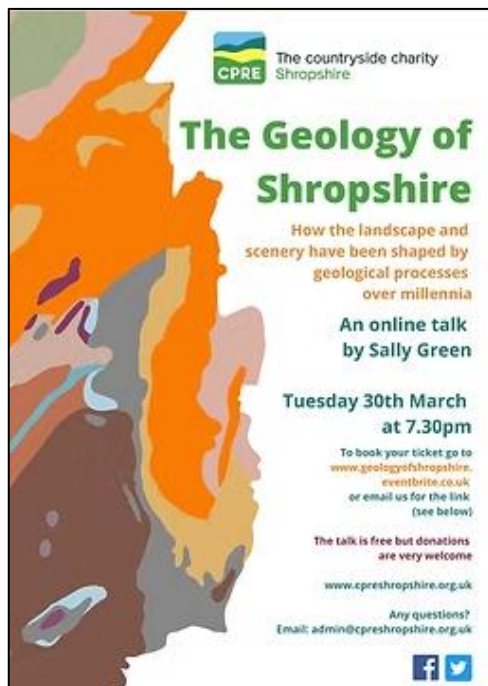


- One of our strands is the inter-counties monitoring of IPU's
- Recently updated map
- Indicted in quality of River Wye in particular
- CPRE Herefordshire citizen science



GEOLOGY

It is geology that underpins Shropshire's amazing diversity of landscapes and habitats. Sally Green has now given five fascinating annual lectures for CPRE on various aspects of Shropshire's geology which can all be viewed for free on YouTube, via www.cpreshropshire.org.uk/geology-talks. Next year's talk will be on fossils.



The Geology of Shropshire

How the landscape and scenery have been shaped by geological processes over millennia

An online talk by Sally Green



Tuesday 30th March at 7.30pm

To book your ticket go to www.geologyofshropshire.eventbrite.co.uk or email us for the link (see below)

The talk is free but donations are very welcome

www.cpreshropshire.org.uk

Any questions? Email: admin@cpreshropshire.org.uk



The Ice Age in Shropshire

Wednesday 30th March 2022, 7.30pm
A free online talk by Sally Green

Shropshire stands right at the southern end of the last Ice Age ice cap, which had a profound effect on our landscape.

Find out about the dramatic climatic changes in the last two million years and the effect of ice movement on the formation of our county's topography.

A follow-up evening to Sally's highly popular talk on Shropshire Geology, this is definitely not to be missed!

Limited places available.

Go to the Events page at www.cpreshropshire.org.uk to book your free place.

www.cpreshropshire.org.uk



The Mines of Shropshire

Thursday 30th March 2023, 7.30pm
A free online talk by Sally Green

Shropshire's rich geology hosts many exploitable minerals and there is a long history of mineral mining and six coal fields in the county. In this talk, learn how ores and coal formed, how the mines changed the Shropshire landscape and settlements and what happened after they were worked out and abandoned.

Free event, but donations welcome

To book, go to the CPRE Shropshire Events page at www.cpreshropshire.org.uk

www.cpreshropshire.org.uk



The Quarries & Building Stones of Shropshire

Free online talk by Sally Green
Thursday 28 March, 7.30pm

Sally will give a brief recap on her original - and highly popular - Geology talk (to view that go to YouTube and search for "The Geology of Shropshire - Sally Green") and will go on to talk about the importance of the base geology to the built environment in the county.

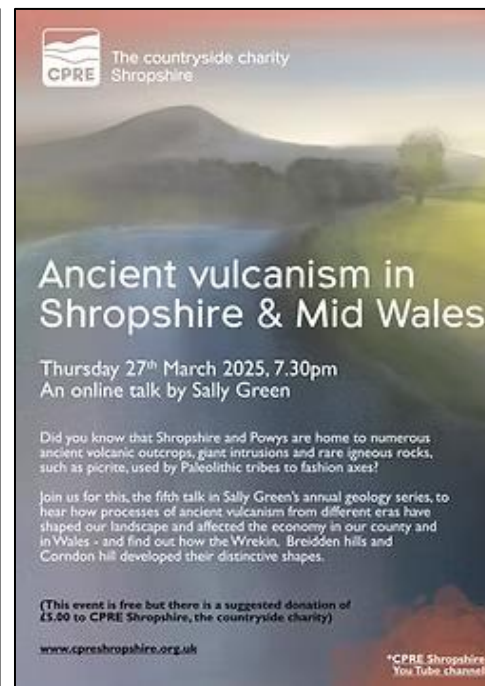
Every village would have had its quarry in the past and so the buildings 'grow' from the rocks, and bricks from the clays.

Sally will look at current and historic quarries and the effect of working quarries like those on Wenlock Edge. Finally she will also touch on sand and gravel pits in Ice Age deposits.

The talk is free but donations are very welcome

www.cpreshropshire.org.uk

Book your place here: <https://bit.ly/3PdDVNP> or email Sarah on admin@cpreshropshire.org.uk



Ancient volcanism in Shropshire & Mid Wales

Thursday 27th March 2025, 7.30pm
An online talk by Sally Green

Did you know that Shropshire and Powys are home to numerous ancient volcanic outcrops, giant intrusions and rare igneous rocks, such as picrite, used by Paleolithic tribes to fashion axes?

Join us for this, the fifth talk in Sally Green's annual geology series, to hear how processes of ancient volcanism from different eras have shaped our landscape and affected the economy in our county and in Wales - and find out how the Wrekin, Breidden hills and Corndon hill developed their distinctive shapes.

(This event is free but there is a suggested donation of £5.00 to CPRE Shropshire, the countryside charity)

www.cpreshropshire.org.uk

*CPRE Shropshire YouTube channel



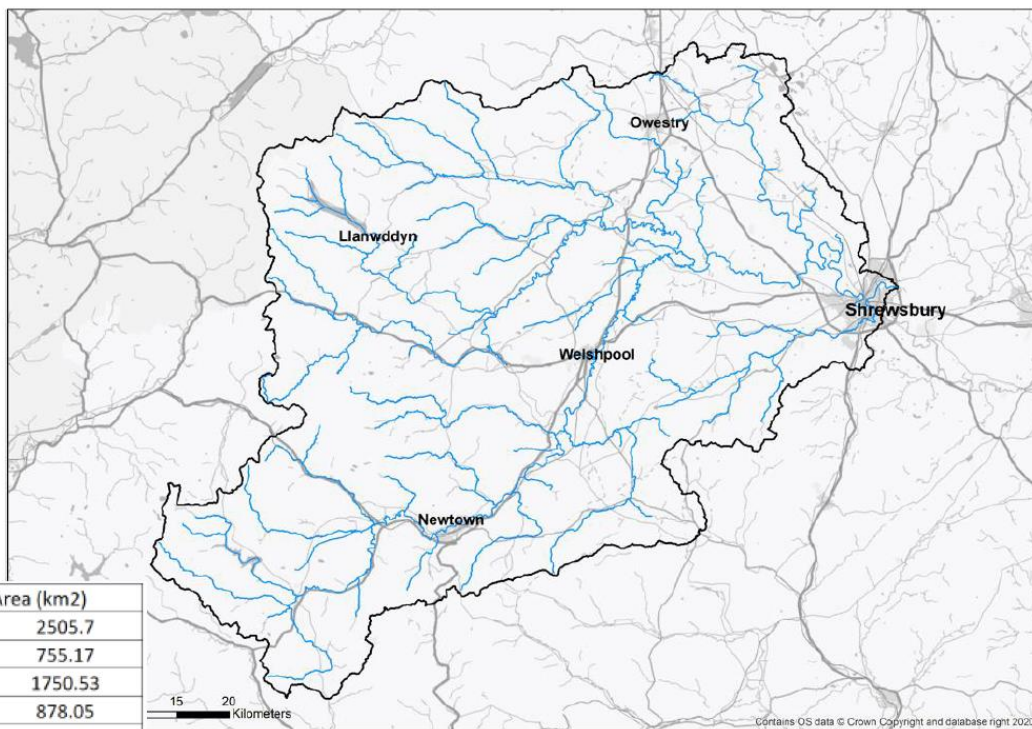
The countryside charity
Shropshire

Flooding is another strand that CPRE members are involved with

Severn Valley Water Management Scheme

Where?

- Focus on intervention in Upper Severn Catchment
- Approx. 2500km²
- Component of wider Severn Strategy/Adaptive Pathway



	Area (km2)
Severn Uplands Catchment	2505.7
English Side	755.17
Welsh Side	1750.53
Vyrnwy Catchment	878.05
Lake Vyrnwy Catchment	74.01
Clywedog Reservoir Catchment	48.92



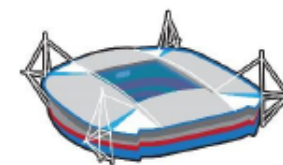
The amount of water we need to store upstream of Shrewsbury to protect against regular flooding will be in excess of 65 billion litres of water. That's roughly equivalent to filling...

57



Wembley
Stadiums

43



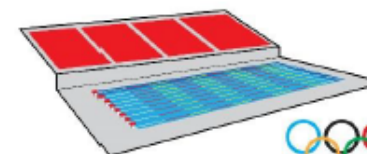
Principality
Stadiums

or

or

26,000

Olympic size
swimming pools



And our Hedgerow Heroes project ticks so many of the boxes

CPRE Shropshire Hedgerow Heroes project



The countryside charity
Shropshire



What is the Hedgerow Heroes project?

- CPRE Shropshire's Hedgerow project has been running for 4 years
- Part of a national CPRE "Hedgerow Heroes" initiative
- Main objective is hedge creation in the countryside
- Very much a "boots on the ground" project
- Leaflet explains more



The countryside charity
Shropshire

Join in with CPRE Shropshire's Hedgerow Heroes project!

CPRE Shropshire's Hedgerow Heroes project has funding for another year.

This year, we aim to plant 4km+ of new native mixed species hedgerow in the county and run more of our popular beginners' hedgelaying and coppice management workshops. We will run more arts/creativity workshops and (new for this year) training sessions on biochar production.

Inside is further information about CPRE Shropshire and opportunities within the hedgerow project for landowners and volunteers.

Do think about joining us as a member; we have been standing up for the Shropshire countryside for over 70 years and nationally CPRE has been campaigning for hedgerow protection for nearly a century!



Sign up for our Hedge Bulletin to keep up to date with hedge project news at www.cpreshropshire.org.uk/hedgerow-project or email for information at admin@cpreshropshire.org.uk

...or try your hand at basic hedgelaying, coppice management or biochar production ...

We have given basic training in hedgelaying to around 200 people in a series of popular introductory two-day workshops since 2021.

We will be running further workshops this winter in basic hedgelaying as well as coppice management and biochar production. We will run our hedgerow arts workshops once more led by a local artist. We hope you will take part!

Sign up now to take part!

Sign up to our mailing list today at www.cpreshropshire.org.uk to get updates and news on the hedge project and planting/training opportunities as they arise through the year. We look forward to seeing you!





www.cpreshropshire.org.uk/hedgerow-project
Email: admin@cpreshropshire.org.uk



The countryside charity
Shropshire

Can you help us plant new hedges this winter?

CPRE Shropshire is seeking volunteers to help plant new mixed (native) species hedgerows this winter as part of Phase 4 of our hedgerow project.

A great opportunity to do something positive for our environment, help provide vital wildlife corridors for nature and enjoy the outdoors as well as meeting like-minded people in the lovely Shropshire countryside.

Volunteers are welcome to take part in one or more planting days. We will show you what to do if you are a beginner. All planting days and sites will be put up on our website later in the year at cpreshropshire.org.uk

Are you a landowner or farmer?

If you are a landowner/farmer wanting to plant/gap up a hedgerow, perhaps reinstating an old hedgeline or connecting up habitat, please contact us. We will need more information about the site and will pay you a visit (some criteria apply). All hedges are created with volunteer help and hedge whips/guards (where needed) are provided free.



Join us!

Go to cpreshropshire.org.uk/join-us to join up.

CPRE, the countryside charity has long campaigned for healthy hedgerows.

Why not join us and stand up for Shropshire's glorious countryside? Or volunteer with us?

Membership costs just £5/month and you can sign up quickly and easily via our website at www.cpreshropshire.org.uk/join-us

Your membership helps us ensure we can continue our work and gives you:

- Local and national membership of CPRE
- A role in protecting the countryside
- Shropshire Voice, our Branch newsletter and occasional email updates
- Countryside Voice, CPRE national magazine



Photo credits: (front page, right): Youngwolders; (back page) Richard Clarke, Really Rural; others: Sarah Jameson



The countryside charity
Shropshire

- Hedgerows are the stitching of the countryside
- 50% of hedgerows in England lost since WWII
- Many now in poor condition/poorly managed
- Fantastic habitat for nature: insects, birds, mammals – leaves, blossom, fruits, nuts
- Wildlife corridors
- Shelter for livestock
- Flood mitigation



- Phase 4 practically complete
- Phases 5 and 6 applied for
- Around 24 km of new, mixed native hedgerow has now been planted over 4 years on around 100 sites in the county with the help of our fantastic volunteers
- In 2024/25, around 300 volunteers spent nearly 1,800 volunteer hours planting hedgerows in over 30 planting days
- Three 2-day hedgelaying workshops and two 2 day coppice management workshops
- Four arts workshops





The countryside charity
Shropshire

Collaboration

Over the 4 years, we have collaborated with a number of other environmental organisations:

- Shropshire Wildlife Trust
- Middle Marches Community Land Trust
- Land, Life & Livelihoods
- Severn Rivers Trust
- Tree Council
- National Trust Stepping Stones project
- Shropshire Hills AONB (now National Landscape)
- Young Wilders



Nigel Adams – hedge management workshop, Admaston Farm, Telford



YouTube · CPRE The countryside charity
600+ followers

CPRE The countryside charity



Phase 2, Hedgerow Heroes Overview

YouTube · CPRE Shropshire
14 May 2023



Part 1 - Hedgerow Management

YouTube · CPRE Shropshire
26 May 2023



Part 2 - Coppicing Workshop

YouTube · CPRE Shropshire
2 Jun 2023



The Hedgelayar

YouTube · CPRE Shropshire
19 Mar 2024

“The Hedgelayar” had 65k views in 7 months



Latest video out soon – [Life in the Coppice](#)



The countryside charity
Shropshire

Interested in joining in?

Sign up via

cpreshropshire.org.uk

